



Magherafelt Primary School



Website: www.magherafeltps.com

Email: info@magherafeltps.magherafelt.ni.sch.uk

Issue: 16

Thursday 17 January 2019

Term 2

P1 Admissions for September 2019



Admissions will open on **2 January 2019** and close on **31 January 2019**.

This year these will be in the form of digital applications. (See our website for links)

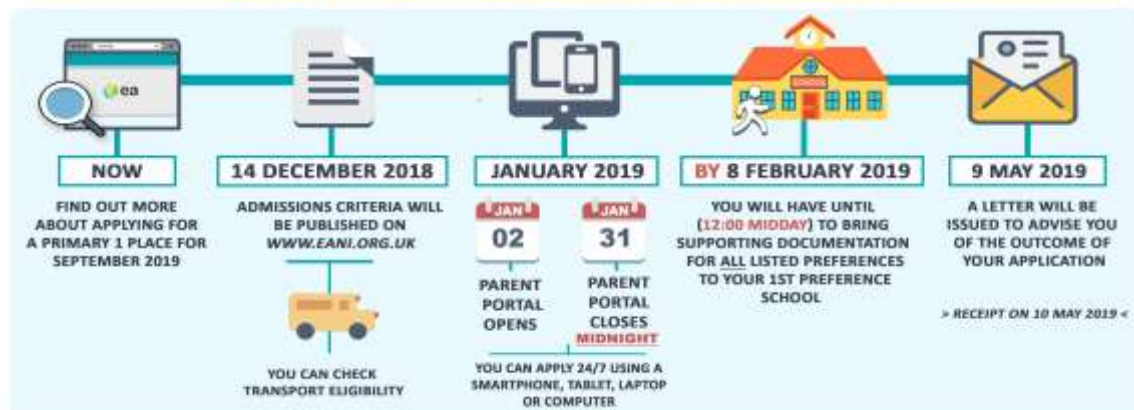
If anyone requires assistance with this procedure, you are more than welcome to come into school on Mondays and Tuesdays from 2-3pm or ring the school office on 028 7963 2822.



KEY DATES FOR PARENTS : Admissions Process for Primary One Places 2019

CHILDREN BORN ON OR BETWEEN **2 JULY 2014 AND 1 JULY 2015** WILL HAVE REACHED COMPULSORY SCHOOL AGE IN SEPTEMBER 2019

CHILDREN BORN ON OR BETWEEN **2 JULY 2015 AND 1 JULY 2016** CAN APPLY FOR A PLACE IN A RECEPTION CLASS (CHILDREN AGED FOUR, AT DATE OF ADMISSION) WHICH IS AVAILABLE IN A SMALL NUMBER OF PRIMARY SCHOOLS.



After-schools Clubs –P5-P7

Monday – P7 Scale Modelling Club 3-3.45pm

Tuesday – P5-P7 Girls' Hockey at Magherafelt High School 3.30-4.30pm

Hair Care

It is probable that head lice have been present in school since the start of the school year with persistent and regular outbreaks in some year groups.

Please check your child's hair and treat if necessary. If head lice are present it is important that everyone in the household is checked.

Thank you for your co-operation.

Information and advice is available from your local pharmacist or health professional.

Re-infection will continue unless each child is checked and treated if appropriate.

Half-Term

School will be closed on 18 and 19 February for half-term.

Community news

- **Robert's Farm Show & Tell for schools and parties – Pet Farm and Farmyard Animals (Hens, Ducks, cats, Dogs, Donkey, Pony & Goats. For more information ring 07511144162**

**Please note, our community news items are advertisements only. The school has no means of endorsing these activities. All parents are advised to seek details and suitability for themselves.*